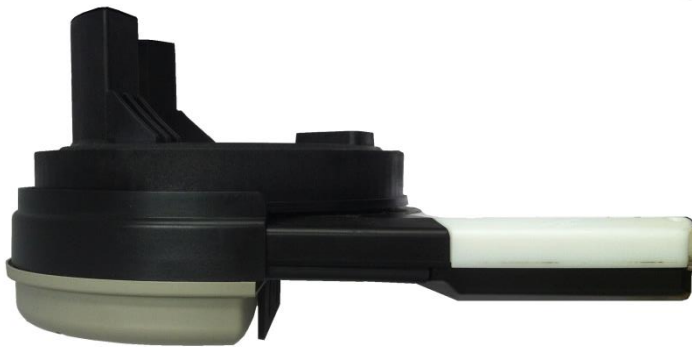


Garage Door Opener

RGD500



Specification

| | |
|---------------------|---|
| Power Input | 240V AC, 50 Hz |
| Motor | 24V Direct Current |
| Lift Rating | 52 Kg |
| Radio Frequency | 433 MHz, Hopping Code |
| Transmitter Storage | Up to 10 codes |
| Code Storage | 30 x 4 Button Transmitters |
| Receiver | Rolling Code |
| Max Door Size | 3m(H) x 6m(W) or up to 22m ² |

Features:

1. Permanent Lubricated Motor, low vibration and quiet
2. Additional Gear - planetary drive gear (which our competitors don't have) increases drive torque to the door by up to 40%.
3. Soft start and stop, powerful, noiseless.
4. Auto Reverse Protection System
5. Rolling Code Technology makes your door more secure by eliminating possible code intercepting and duplication.
6. Extension Arm Kit, will be able to retro fit on any door provided it satisfies the side room space requirement.
7. Mechanical Limit Switch Setting is reliable and simple to understand, easy for self-installation.

Garage Door Opener

Smooth, Powerful Drive Operation

RGD500 slimline housing accommodates a high performance 500 Newton motor capable of lifting even the largest of roller doors. Latest in design in engineering guarantees you reliable operation every time, with the RGD500 one-piece cast metal base designed to take the majority of the load during opening and closing so that the motor and gear mechanisms are able to run smoothly and precisely. Slim but max lift-up force due to a planetary gear drive system.

Soft Start & Soft Stop – An Advanced New Feature for Roller Doors

RGD500's advanced technological features means the variable speed motor is able to soft start and soft stop roller doors. This feature, which gently accelerates the door during closing, is especially useful when replacing openers on older garage doors where jams or door "booming" can often occur due to age-related loss of spring tension and/or stickiness of the door's tracks.

Automatic Safety Reverse System

An inbuilt Automatic Safety Reverse System is standard on our RGD500 roller garage openers. This ensures that your garage door reverses if it encounters an obstruction whilst opening. For additional safety, an optional Infrared Beam Safety Protection is also available. This system detects obstructions with an infrared beam, which, when broken, automatically reverses the garage door to prevent damage to your door or car.

Hopping Code Technology

The inclusion of hopping code technology as a standard feature on the RGD500 garage roller door opener means that your opener is as safe as it is reliable. The code hopping mechanism generates a unique code each time the transmitter is activated, and with over 4.29 billion different possible combinations, hopping code technology is your promise of security for a lifetime.

Additional Features

Electronic Power Stabiliser – An Industrial Innovation

The RGD500 is specially designed to withstand wide power fluctuations in even volatile power supply environments. The unit incorporates as a standard feature where other openers would fail to operate, the RGD500 is guaranteed to continue functioning smoothly and reliably (see tech specs below). The Power Stabiliser also offers the added benefit of increased protection for the electronics of the opener.

Automatic Courtesy LED Light

A Courtesy Lighting System is automatically activated for three minutes each time the remote transmitter is used. The LED lighting is exceptionally bright and energy efficient, and there are no globes to replace.

General Suitability:

- Most residential car garage doors, rolling type with proper spring balance.
- Door height: up to 3500 mm
- Door width: up to 6000 mm
- Typical operating cycle: 4-20 times a day
- Recommended door operating force: <20 kg

Installation Requirements:

- Curtain/Drum to Inner Bracket: 35mm/65mm
- Curtain/Drum to Outer Bracket: 75mm/100mm