

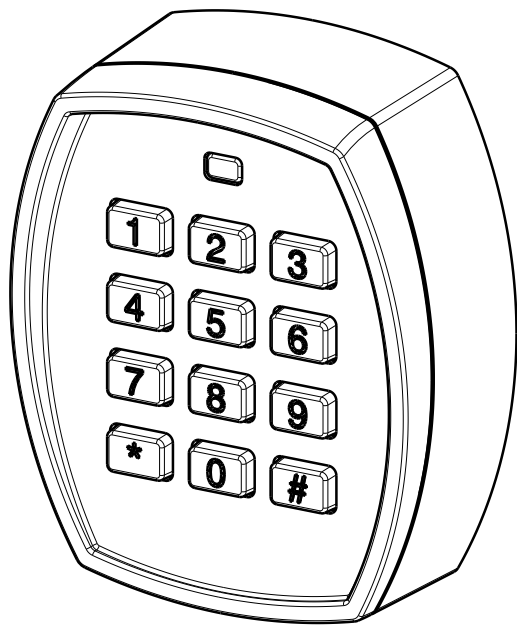
- **Wi** -

**F. 433.920 MHz**

**GB**

## KEYBOARD SELECTOR 16 CHANNELS

INSTRUCTIONS AND WARNINGS FOR USE AND MAINTENANCE



SAMT Garage & Gate Automation

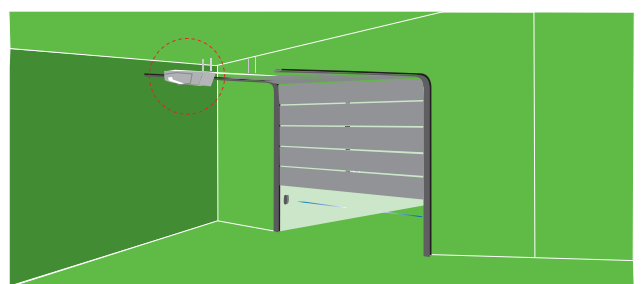
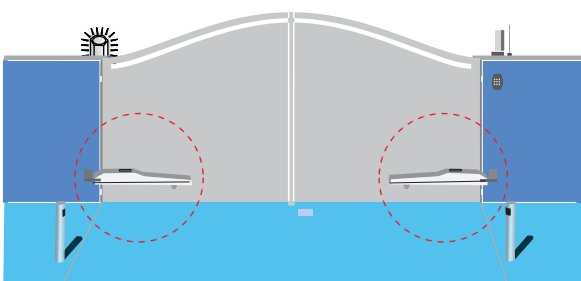
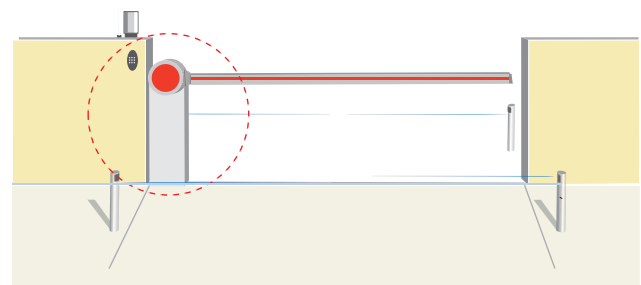
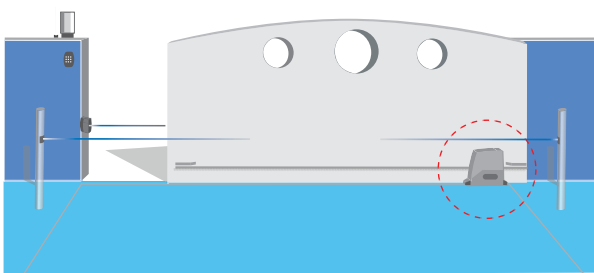
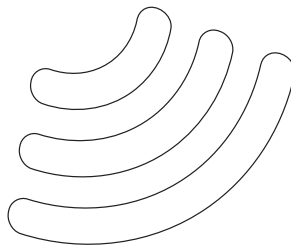
Address: 19/5 Lyn Parade

Prestons NSW 2170

Phone: (02) 9607 4100

Email: [sales@samt.com.au](mailto:sales@samt.com.au)

Website: [www.samtgatemotors.com.au](http://www.samtgatemotors.com.au)



## 1 - User Code Programmation.

It is possible to set max 16 user codes. Every code must be composed of 5 numbers. In order to set your own code you have to press simoultan iously and keep pressing the [ \* ] key and the [ # ] key for 3 seconds ( The red LED starts blinking) you have 10 seconds to enter your code. The correct programmation is confirmed by a “Beep” sound that lasts for 1 second , else you will ear 3 short “Beeps” ( Full memory / code already present ).

## 2 - Transmission of the user code.

Type the 5 numbers code wich was memorized earlier , the action of pressing a key will be evident as a red Led will light up and you will hear a short “ Beep” . While pressing the fifth number the radio transmission will be activated automatically , the red LED will shortly light up and you’ll hear a “Beep” sound of 1 second.

## N.B.

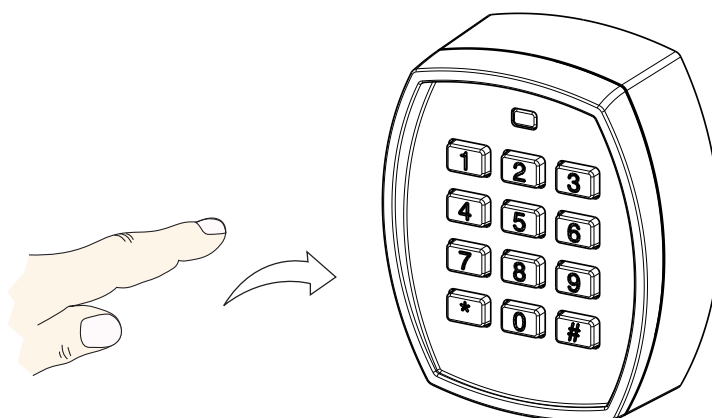
To memorize the code in the automation follow the instructions of the radio reciver like it is a normal radio control.

## 3 - Deleting codes.

In order to delete all the codes , remove the batteries and press the [ \* ] key , insert the batteries keeping the [ \* ] key pressed for 10 seconds, you will hear 2 long “Beeps” . In case of mantainance work resetting the radio reciver is the best thing to do .

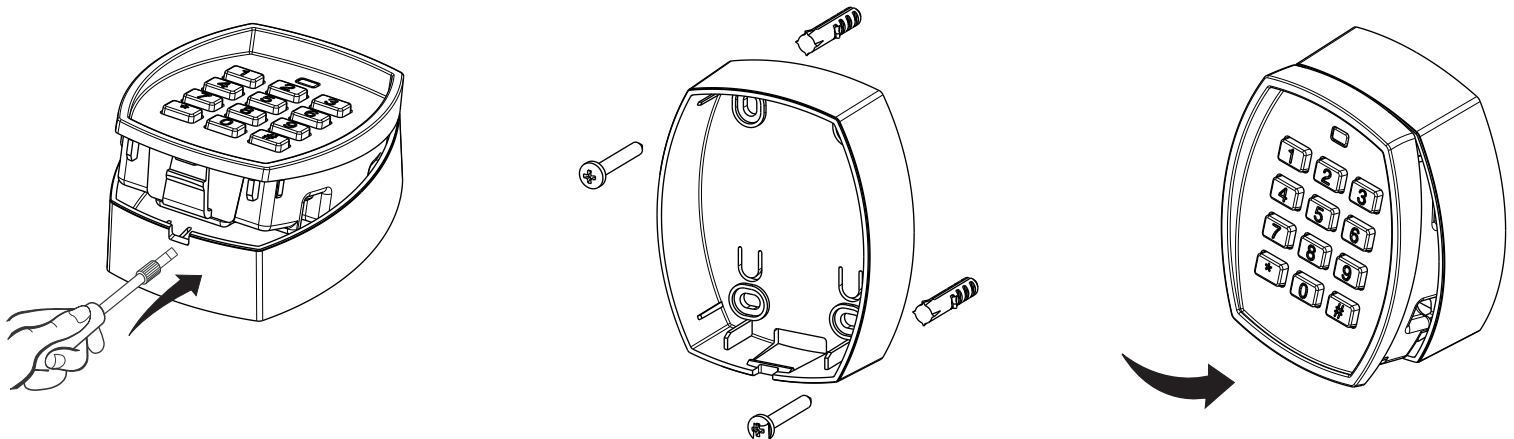
## Notes.

Pressing the # or the [ \* ] key will activate the backlight for 4 seconds .



#### 4 - Fixing the radio to the wall.

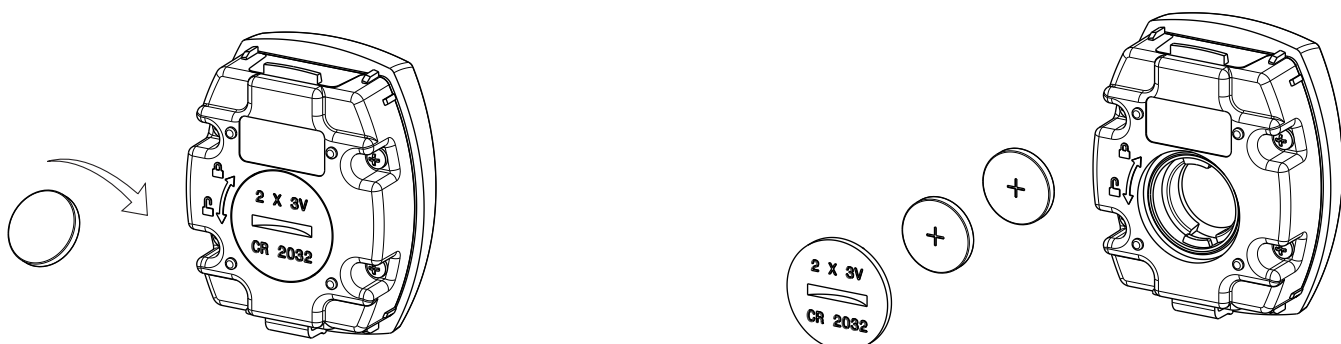
Before fixing the keyboard to the wall verify that the radio can reliably transmit to it's own reciver . Avoid fixing the radio to metallic surfaces or structures that may block the radio signal.



#### 5 - Changing batteries.

The radio keyboard is mounting to CR2032 batteries , respect the polarity.

To ensure that it is working properly remeber to periodically check the efficiency .If the batteries are exhausted , after the normal transmission of the user's code , the red LED will blink for 5 times and you will hear 5 fast "Beeps " this indicates that the batteries are exhousing.



#### Technical data

N° Channels	Code type	Frequency	Power of beam	Codification	Supply	Temperature	Reach on LIFE receivers
16	Rolling-Code	433,92 MHz	1 mW	64 Bit	6V	-20 / +50°C	20 / 50 m