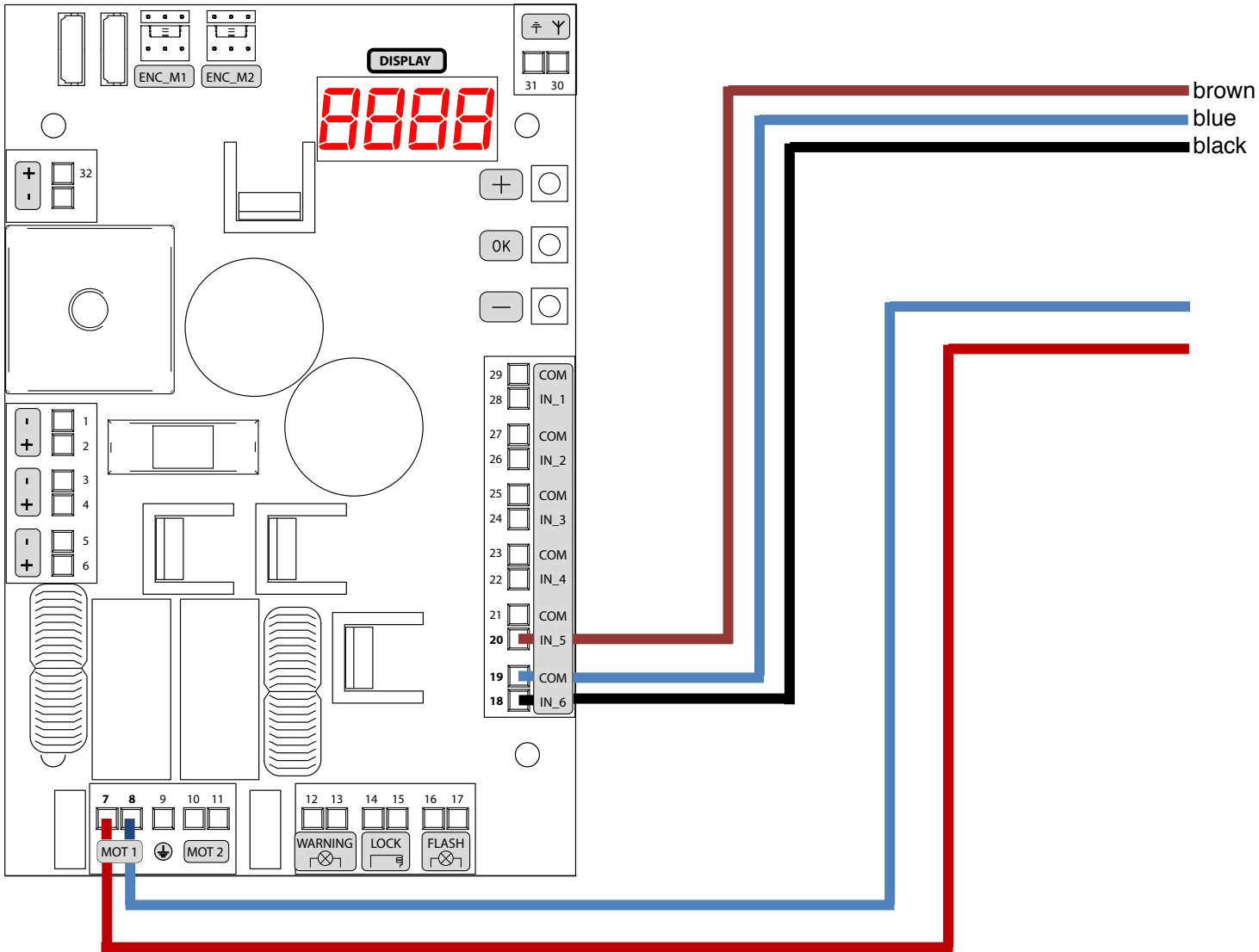
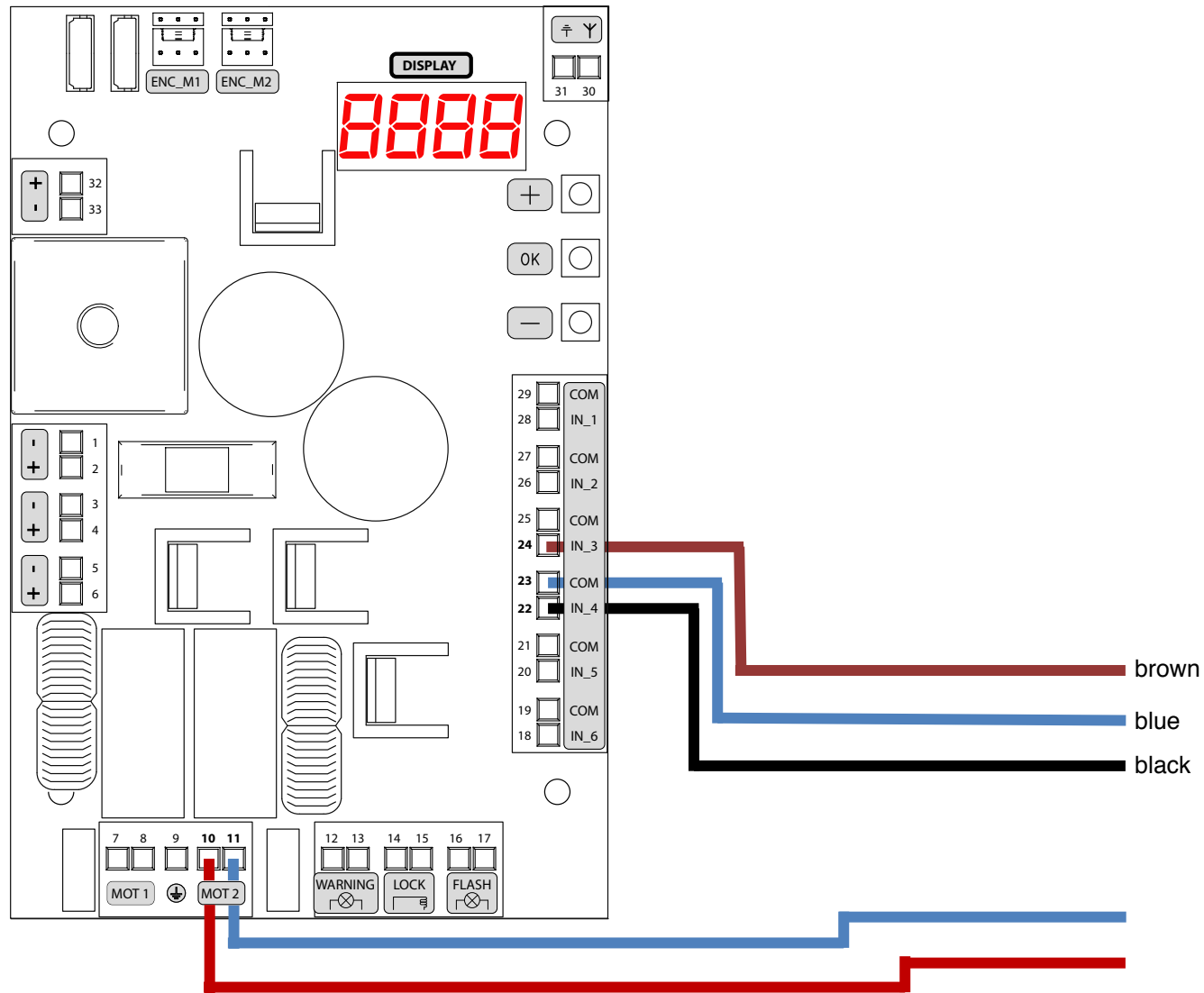


LIVI 502 - LIMIT SWITCH WIRING



Limit Switch Kit





Limit Switch Kit



DEA Control Board Settings

Ensure NET24N is in **TYPE 01**

Jumpers J5 & J9 are in Position B – “Operators without encoder”

| Parameter | Value | Description |
|-----------|-------|---------------------|
| P019 | 013 | Motor 2 Open Limit |
| P020 | 015 | Motor 2 Close Limit |
| P021 | 012 | Motor 1 Open Limit |
| P022 | 014 | Motor 1 Close Limit |
| P028 | 003 | “Look” Motor |
| P029 | 001 | No Encoder(s) |
| P030 | 002 | Two Motors |