



# *DOORHAN*®

## AUTOMATION SYSTEMS



➤ All automatics DoorHan different impeccable performance and advanced functionalities. It is made on the modern equipment with use of hi-tech materials. Each of the elements of automation systems is individually tested on several parameters, which guarantees 100 % quality control of products. DoorHan automation can be used both in residential and industrial facilities. All drives operators smoothly in a wide range of temperatures, as well as reliability, safety, ease of installation and maintenance.





# TABLE OF CONTENTS

RESIDENTIAL SECTIONAL DOORS OPERATORS	4
INDUSTRIAL SECTIONAL DOORS OPERATORS	6
SLIDING GATES OPERATORS	8
SWING AND ARM GATES OPERATORS	10
BARRIERS	12
ACCESSORIES	14
TECHNICAL SPECIFICATIONS	16

# DOORHAN®

## RESIDENTIAL SECTIONAL DOORS OPERATORS



ENERGY-SAVING  
ACCESSORIES



INCREASED STRENGTH  
CASE



SIMPLE  
INSTALLATION



SECTIONAL-800PRO / SECTIONAL-1000PRO

- High quality standard. The operators feature a robust body, galvanized motor and built-in encoder which ensures an increased operation performance.
- Energy saving. Minimum energy consumption, due to the built-in LED lamp, which is more durable and provides a longer service life.
- Long service life. Smooth start and stop feature, ensures a minimum load on system components.



# DOORHAN®

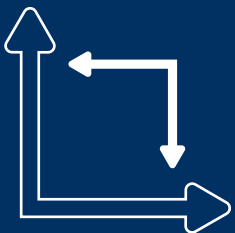
## INDUSTRIAL SECTIONAL DOORS OPERATORS



STABLE DURABLE  
PERFORMANCE



CHAIN REDUCER IS  
PROVIDED



COMPACT  
DIMENSIONS

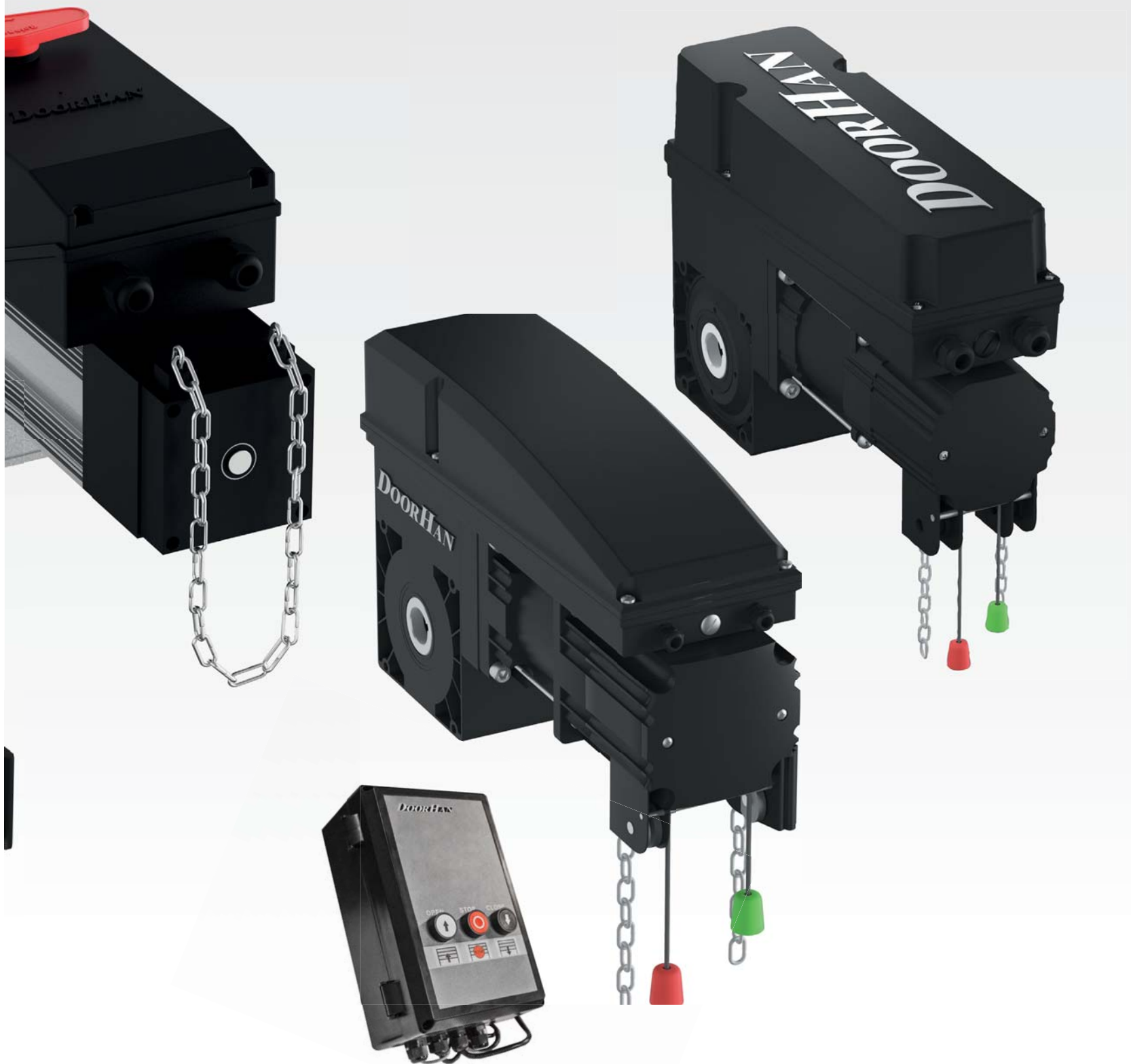


SHAFT-120KIT / SHAFT-200KIT

- Soft start and soft stop. A quiet and a soft door motion ensures efficiency over the long run (Shaft-50PROKIT/85PROKIT).
- Wide range of accessories. The possibility to connect various accessories makes the operation more convenient and secure.
- Built-in emergency chain release ensures the ability to operate the door in case of power failure.

SHAFT-30IP65 / SHAFT-60IP65

SHPRO KIT



SHAFT-50PROKIT / SHAFT-85PROKIT

# DOORHAN®

## SLIDING GATES OPERATORS



INCREASED SERVICE  
LIFE



EMERGENCY  
UNLOCK



SIMPLE  
INSTALLATION



SLIDING-1300PRO / SLIDING-2100PRO



- Ergonomic design. The operator doesn't take too much space and has a modern appearance.
- Connection convenience. The operator body especially designed for maximum convenience of installation.
- Top quality materials. We use high strength plastic and superior quality of aluminium.
- Oil bath. The gear motor immersed in liquid lubricant, which increases the possible intensity and lifetime of motor.



SLIDING-500-24V / SLIDING-500PRO / SLIDING-800PRO

# DOORHAN®

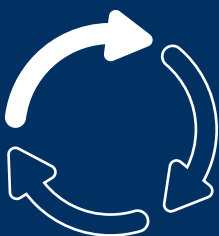
## SWING AND ARM GATES OPERATORS



**SIMPLE**  
INSTALLATION




**SHOCKPROOF**  
PLASTIC



**STABLE AND LONG**  
WORK



 SWING-4000



 SWING-3000PRO / SWING-5000PRO

- Ergonomic design. The operator doesn't take too much space and has a modern appearance.
- Connection convenience. Operator body especially designed for maximum convenience of installation.
- Top quality materials. We use high strength plastic and superior quality of aluminium.
- Oil bath. The gear motor immersed in liquid lubricant, which increases the possible intensity and lifetime of motor.



ARM-230



ARM-320PRO

# DOORHAN®

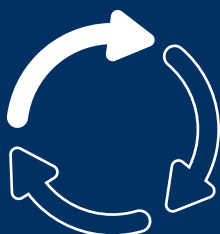
## BARRIERS



STEEL GALVANIZED  
CASE



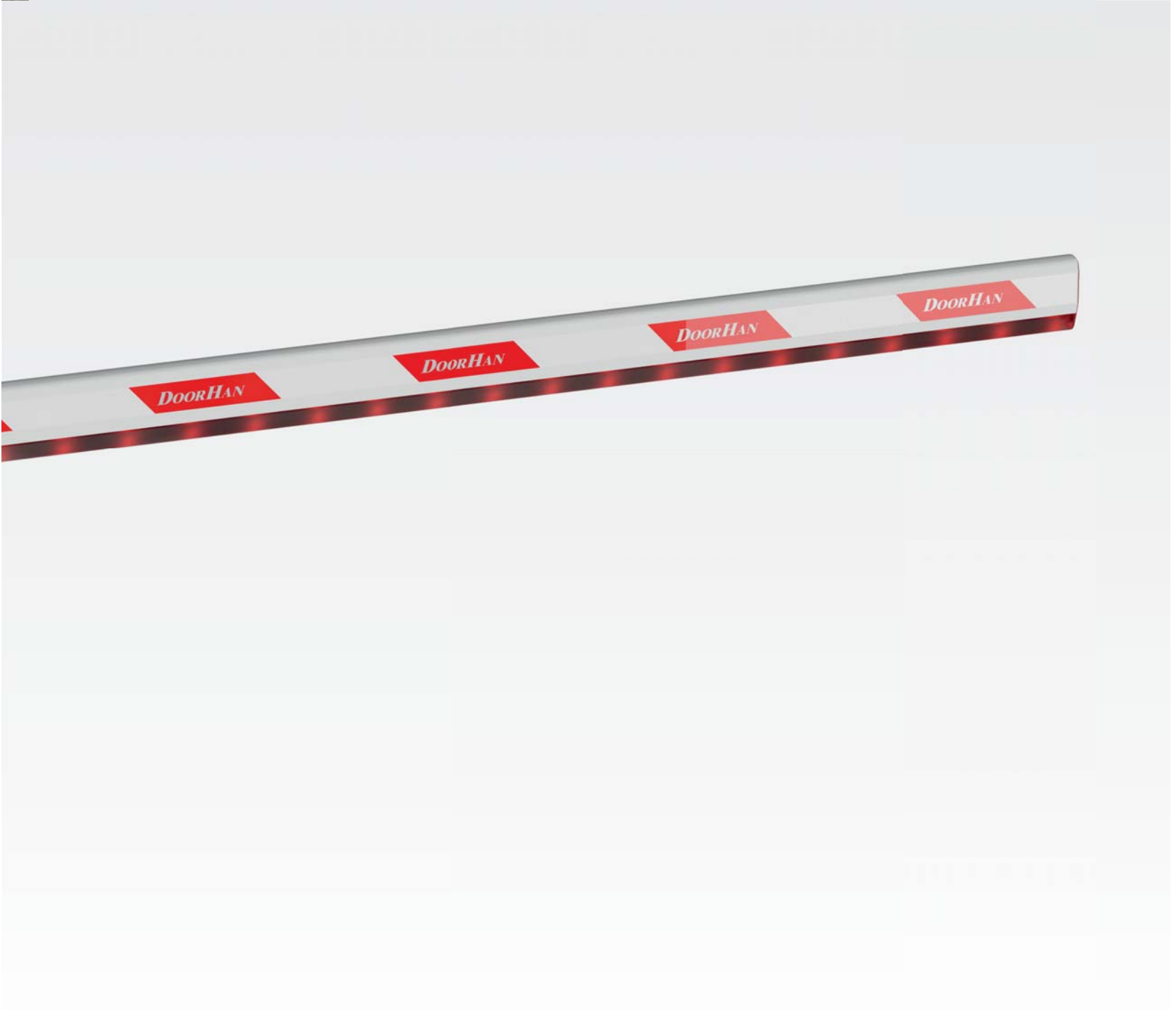
INCREASED SERVICE  
LIFE



STABLE AND LONG  
WORK



- Secured access solution. Barriers are intended for vehicle access control; capable of spanning openings of up to 6 meters.
- Resistance. Anti-vandal steel body provides protection against forced opening; along with its reinforced elements, DoorHan barriers ensure a constant operation during extreme weather conditions.
- Durability. Barriers have a longer service life, due to the application of limit switches.



# ACCESSORIES



Transmitter-2PRO



Transmitter 4 EX



Transmitter 4PRO-Black



Lamp-PRO



📖 WI-FI module



📖 Photocells-N



📖 Keycode



📖 Keypad

## SECTIONAL-800PRO / SECTIONAL-1000PRO



TECHNICAL SPECIFICATIONS	SECTIONAL-800PRO	SECTIONAL-1000PRO
Supply voltage, V		220-240
Power frequency, Hz		50/60
Maximum power consumption, W	150	200
Force, N	800	1000
Door speed, m/sec		0.1
Maximum door weight, kg	150	180
Maximum opening height, mm	2800	3400
Intensity, %		50
Temperature range, °C		-20...+55
Degree of protection		IP20

## SECTIONAL-1200



TECHNICAL SPECIFICATIONS	SECTIONAL-1200
Supply voltage, V	220-240
Power frequency, Hz	50/60
Maximum power consumption, W	300
Force, N	1200
Door speed, m/sec	0.1
Maximum door weight, kg	220
Maximum opening height, mm	3800
Intensity, %	50
Temperature range, °C	-20...+55
Degree of protection	IP20





### SHAFT-50PROKIT / SHAFT-85PROKIT



TECHNICAL SPECIFICATIONS	SHAFT-50PROKIT	SHAFT-85PROKIT
Supply voltage, V	220-240	220-240
Power frequency, Hz	50/60	50/60
Maximum power consumption, W	370	480
Torque, Nm	50	85
Shaft speed, RPM	24	21
Degree of protection	IP54	IP54
Intensity, %	65	65
Temperature range, °C	-25...+50	-25...+50
Maximum door weight, kg	270	370
Chain length, m	8	8
Smooth start and stop	yes	yes

### SHAFT-30IP65KIT / SHAFT-60IP65KIT



TECHNICAL SPECIFICATIONS	SHAFT-30IP65KIT	SHAFT-60IP65KIT
Supply voltage, V	220-240	380-400
Power frequency, Hz	50/60	50/60
Maximum power consumption, W	300	350
Torque, Nm	30	60
Shaft speed, RPM	32	32
Degree of protection	IP65	IP65
Intensity, %	50	60
Temperature range, °C	-40...+55	-40...+55
Maximum door weight, kg	230	320
Chain length, m	8	8
Smooth start and stop	no	no

### SHPRO KIT

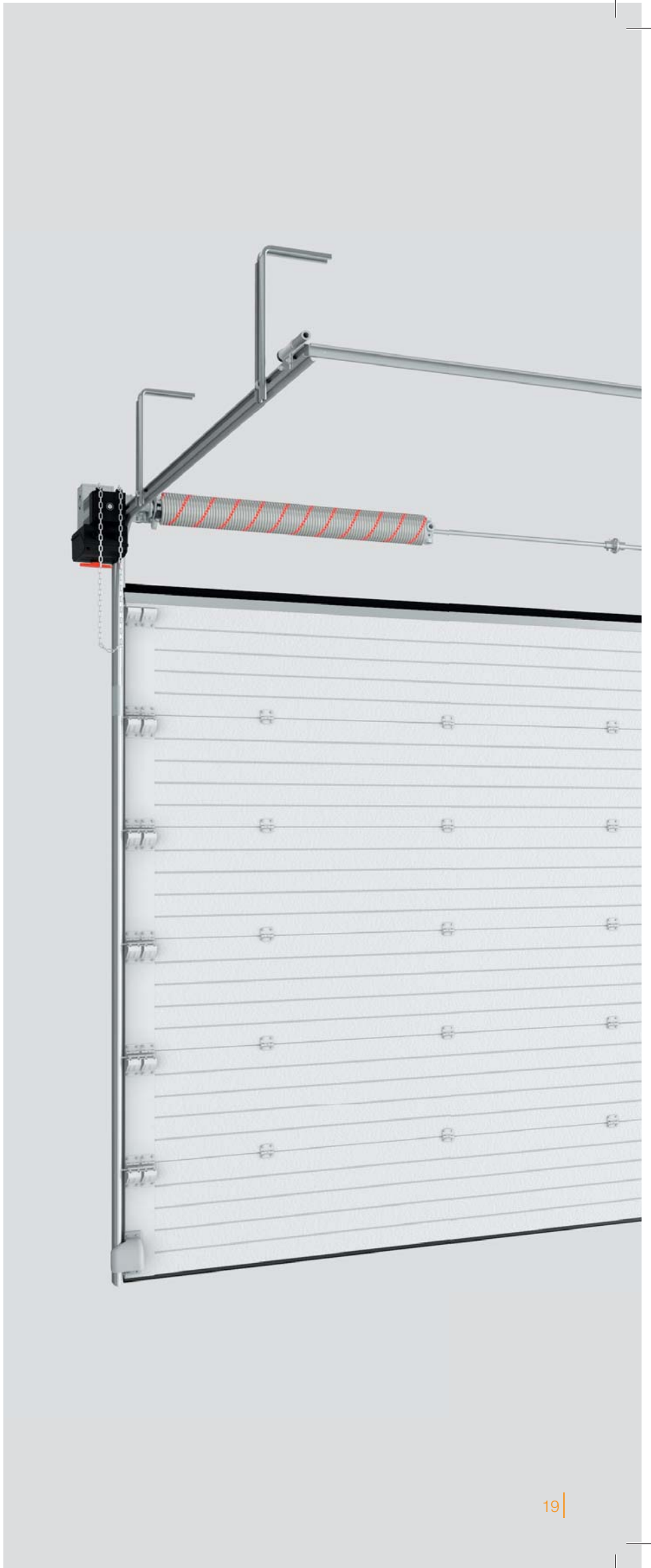
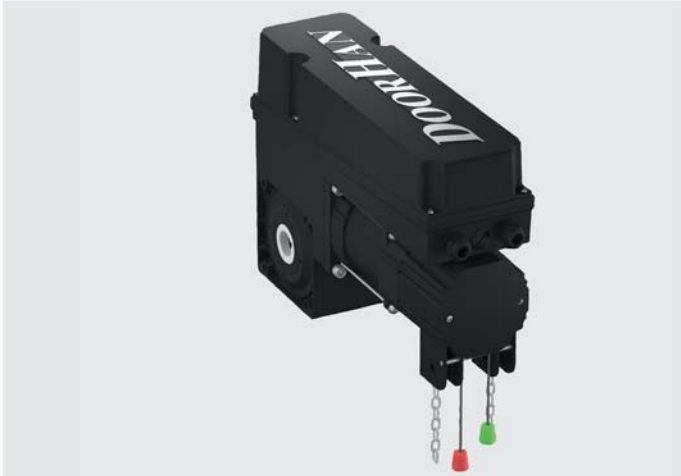


TECHNICAL SPECIFICATIONS	SHPRO KIT
Supply voltage, V/Hz	220-240
Power frequency, Hz	50/60
Maximum power consumption, W	370
Torque, Nm	50
Shaft speed, RPM	24
Maximum door weight, kg	270
Intensity, %	40
Temperature range, °C	-25...+50
Degree of protection	IP54

### SHAFT-120KIT / SHAFT-200KIT



TECHNICAL SPECIFICATIONS	SHAFT-120KIT	SHAFT-200KIT
Supply voltage, V/Hz	380-400	380-400
Power frequency, Hz	50/60	50/60
Maximum power consumption, W	700	850
Torque, Nm	120	200
Shaft speed, RPM	22	22
Maximum door weight, kg	550	850
Intensity, %	65	65
Temperature range, °C	-20...+55	-20...+55
Degree of protection	IP44	IP44



## SLIDING-500-24V / SLIDING-500PRO / SLIDING-800PRO



TECHNICAL SPECIFICATIONS	SLIDING-500-24V	SLIDING-500PRO	SLIDING-800PRO
Supply voltage, V	220-240	220-240	220-240
Power frequency, Hz	50/60	50/60	50/60
Maximum power consumption, W	110	260	280
Gate speed, m/min	10/17	9	12
Maximum gate weight, kg	500	500	800
Intensity, %	100	50	50
Temperature range, °C	-20...+55	-20...+55	-20...+55
Degree of protection	IP54	IP54	IP54

## SLIDING-1300PRO / SLIDING-2100PRO

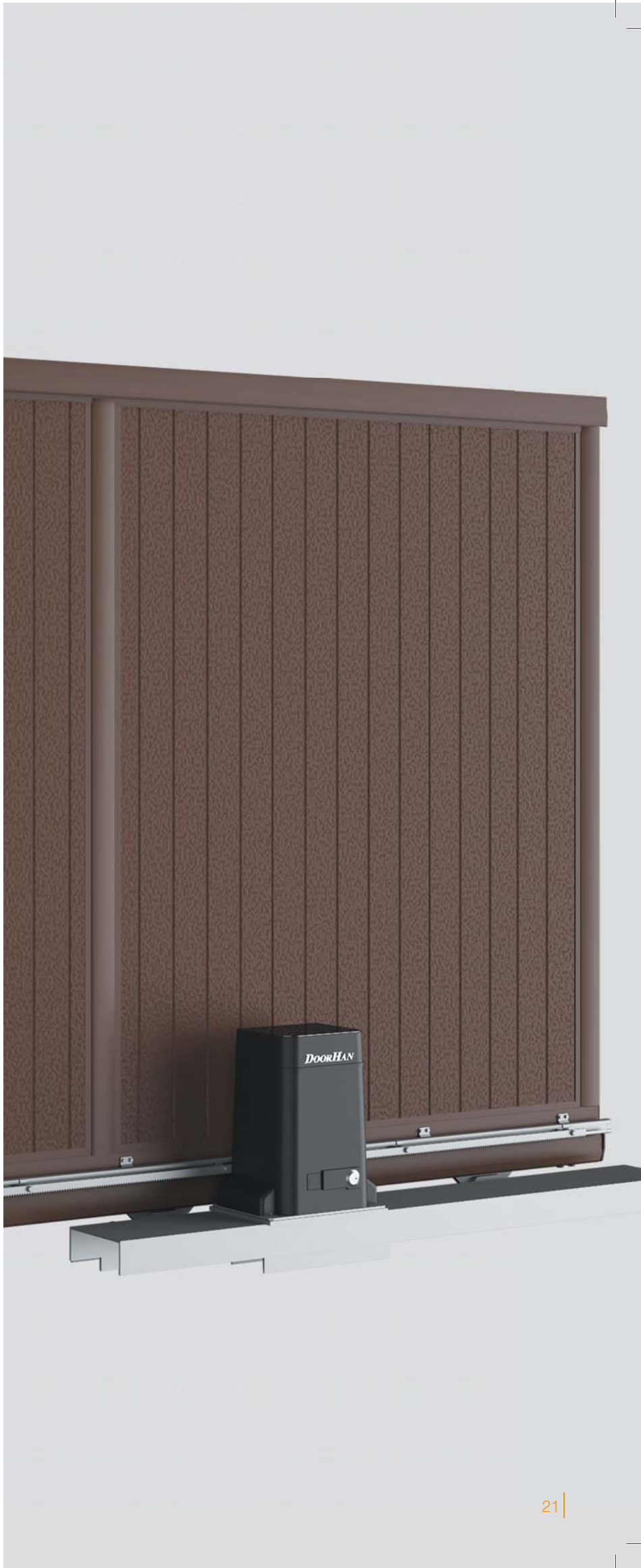


TECHNICAL SPECIFICATIONS	SLIDING-1300PRO	SLIDING-2100PRO
Supply voltage, V		220-240
Power frequency, Hz		50/60
Maximum power consumption, W	550	750
Gate speed, m/min		10
Maximum gate weight, kg	1300	2100
Intensity, %		70
Temperature range, °C		-40...+55
Degree of protection		IP54

## BARRIER-3000/4000/5000/6000



TECHNICAL SPECIFICATIONS	BARRIER-3000	BARRIER-4000	BARRIER-5000	BARRIER-6000
Supply voltage, V			220-240	
Power frequency, Hz			50/60	
Maximum power consumption, W			220	
Maximum boom length, mm	3000	4000	5000	6000
Boom type		Aluminum: oval, oval with LED light		
Overall dimensions, mm		270 × 1015 × 140		
Number of springs		1		2
Opening time, sec	2	4	5	6
Intensity, %			70	
Temperature range, °C			-40...+55	
Degree of protection			IP54	



# TECHNICAL SPECIFICATIONS

## SWING and ARM gates operators

### SWING-4000



TECHNICAL SPECIFICATIONS	SWING-4000
Supply voltage, V	220-240
Power frequency, Hz	50/60
Maximum power consumption, W	150
Maximum leaf weight, kg	400
Maximum leaf length, m	4
Intensity, %	50
Temperature range, °C	-20...+55
Degree of protection	IP44

### SWING-3000PRO / SWING-5000PRO



TECHNICAL SPECIFICATIONS	SWING-3000PRO	SWING-5000PRO
Supply voltage, V	220-240	
Power frequency, Hz	50/60	
Maximum power consumption, W	150	
Maximum leaf weight, kg	400	500
Maximum leaf length, m	3	5
Intensity, %	50	50
Temperature range, °C	-40...+55	
Degree of protection	IP54	

### ARM-230



TECHNICAL SPECIFICATIONS	ARM-230
Supply voltage, V	220-240
Power frequency, Hz	50/60
Maximum power consumption, W	120
Torque, Nm	230
Maximum leaf weight, kg	300
Maximum leaf length, m	2
Intensity, %	50
Temperature range, °C	-20...+55
Degree of protection	IP44

### ARM-320PRO



TECHNICAL SPECIFICATIONS	ARM-320PRO
Supply voltage, V	220-240
Power frequency, Hz	50/60
Maximum power consumption, W	150
Torque, Nm	320
Maximum leaf weight, kg	400
Maximum leaf length, m	2
Intensity, %	30
Temperature range, °C	-20...+55
Degree of protection	IP54

